

Highlights

East West Rail 'Western Section' forecast to deliver £73m boost to the regional economy

Study shows economic growth potential justifies further investment in EWR extension to Cambridge and East Anglia

Phase 1: Oxford to Bicester Town

- Oxford Parkway to Bicester Town construction work on target to re-open summer 2015 and Oxford to Oxford Parkway Spring 2016

Phase 2: Bicester to Bedford, Milton Keynes to Aylesbury

- A series of public information meetings and consultation on proposed railway crossing improvements is underway
- Topographical, environmental and structural surveys continue
- Parsons Brinkerhoff appointed to develop railway design

Spreading the Word!

We are keen to spread the word about East West Rail and keep people informed about progress on this exciting project and regularly give talks and presentations to business and community groups. If you would like to find out more about, please contact Caryl Jones, Communications Manager for the East West Rail Consortium. Phone 07785 927210 or email caryl.jones@bedford.gov.uk

To receive these news and project updates by email, please visit www.eastwestrail.org.uk and subscribe.

East West Rail - A Catalyst for Economic Growth

The East West Rail Consortium, comprising the local authorities along the corridor from East Anglia to Oxfordshire, was formed in 1995 with a single aim – to support the regional economy through improved transport links from East Anglia to Central, Western and Southern England.



More than 'just a railway' the East West Rail link is a catalyst for growth that will enhance the environment for existing and new businesses, attract inward investment and help create 1,000s of new jobs.

A recent assessment of the economic benefit of East West Rail by independent consultants Arup forecast a £73 million annual boost to the regional economy as a result of investment in the East West Rail 'Western Section' to enable new passenger and freight services to operate between Milton Keynes and Aylesbury, Bedford and Oxford – and beyond. This is double an earlier forecast in 2010, reflecting the importance of East West Rail not only to the region it will serve but as part of the national strategic rail network.

A further study by Atkins, commissioned by the East West Rail Consortium and published in August shows there is also potential to unlock significant economic growth that justifies further investment in the EWR 'Central Section'. This involves creating a new stretch of railway to link the EWR Western Section to East Anglia via Cambridge. Network Rail is now working closely with the Consortium and Department for Transport to identify the best route for this line and how to use the existing railway infrastructure to create new and improved rail connections between key locations in the region. The Consortium aims to develop a robust business case to secure funding for the EWR Central Section in the next five-year spending period 2019 to 2024.

Further information and both reports are published in full on www.EastWestRail.org.uk/News

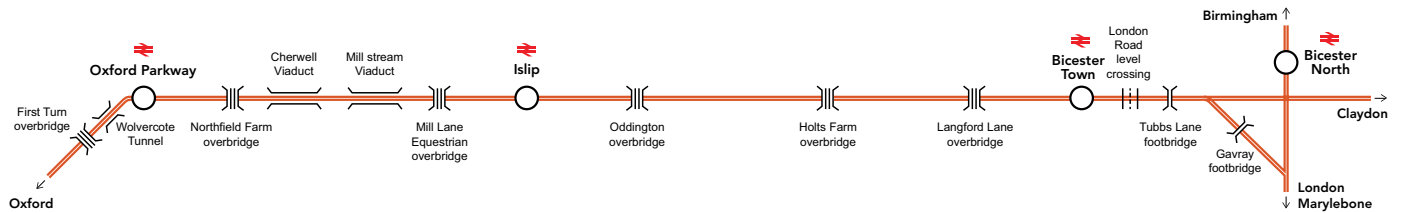


Phase 1 - Oxford to Bicester Town

Construction work is progressing to construct a new chord at Bicester to link the Chiltern Mainline, upgrade and re-signal the rail track, build the new Oxford Parkway station at Water Eaton and improve stations at Islip and Bicester Town.

This work combines the Chiltern Railways scheme to introduce a new fast passenger service between Oxford and London Marylebone via Bicester and to provide the infrastructure for East West Rail services between Reading, Oxford, Bedford and Milton Keynes.

Work is on schedule for the new Chiltern Railways passenger service to start operating from Oxford Parkway to London Marylebone via Bicester Town by summer 2015 and from Oxford by Spring 2016.



^ Chord construction nears completion with the extension of the chord culvert. An engineering train delivers ballast for the chord construction.



^ Completion of a temporary weighbridge for Hansons Aggregates and new sidings at Banbury Road mean that the site for Oxford Parkway station can be cleared ready for construction.

^ Three overbridges are under construction at Oddington (left), Wendlebury (right) and Langford Lane.



^ Extensive civil engineering work to widen the existing embankment at the MoD site.

^ Scaffolding is removed from Tubbs Lane footbridge and permanent hand rails are being installed on this busy crossing for pedestrians and cyclists.

For more details of work taking place as it progresses, please visit www.bicestertooxfordcollaboration.com



Phase 2: Bicester to Bedford, Milton Keynes to Princes Risborough

A priority aim for the East West Rail programme is not only to conserve but enhance the biodiversity in the area through creative environmental solutions. The wider geographical area includes some 638 hectares of ancient woodland within 2kms of the railway line.



Thomson Ecology has been undertaking ecology and wildlife habitat surveys through the year to understand the potential environmental impact of East West Rail and to identify the presence or absence of various protected species. 32 habitat types have been identified, six of which are 'priority' habitats.

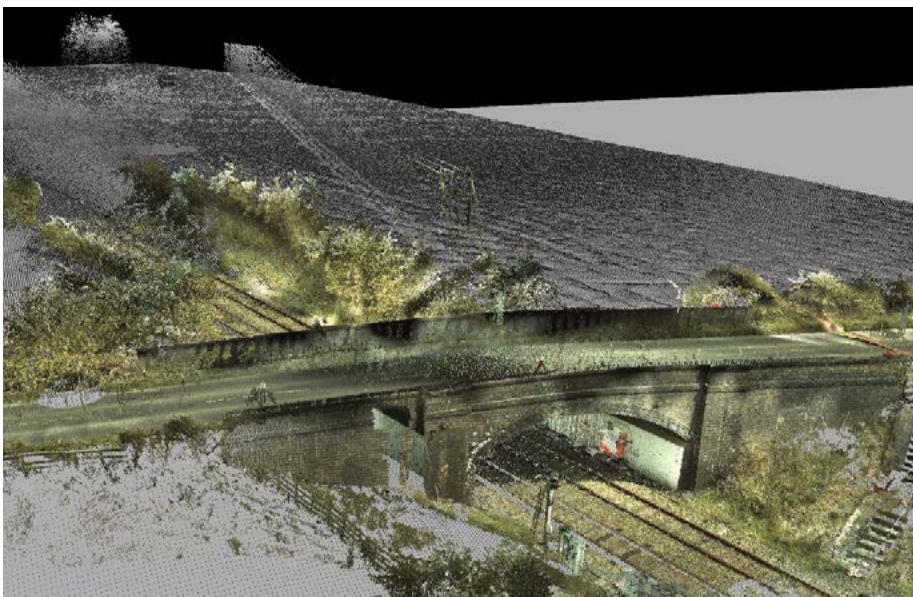
Badgers, newts, bats, reptiles, some scarce invertebrates and a large variety of plant species are present on or adjacent to the mothballed section of track. Bat surveys have been ongoing for the last 12 months and dormouse surveys are continuing through to the end of November. Further ecology surveys will be undertaken to ensure that environmental impacts are managed effectively.

Early works design development contract awarded

Network Rail has awarded Parsons Brinckerhoff a contract to carry out timetable modelling, the design and alignment of track, civil engineering works to bridges and embankments, geotechnical investigation and survey works and studies on how the reinstated railway will impact on level crossings, station design, consents, ecology and environmental works. Building on the work already completed by the East West Rail Consortium and Network Rail, this is a significant milestone for the East West Rail scheme because it will enable the project to be developed to the point where the contract for detailed design and construction can be awarded.



^ Day shelters for dormice are placed along the route to help assess the whether dormice are present.



^ Topographical and structural surveys have been taking place throughout the summer along the East West Rail line in advance of more detailed design work This image has been created from combined Laserscan and Lidar survey data.



^ Tiles provide an attractive resting place for reptiles.



^ Trampled grass and burrowing indicate the presence of badgers.

Notice of Consultations on Crossings and Rights of Way



Network Rail's East West Rail project team is holding a series of Public Information and Consultation evenings to identify how best to make 104 railway crossings and rights of way as safe as practically possible before East West Rail train services start to operate. The purpose of these meetings is to draw on local knowledge at an early stage before detailed designs are developed and to help devise the most appropriate solutions. In addition to the evenings scheduled in Buckinghamshire and Oxfordshire, (see table), the team is also currently liaising with landowners and other stakeholders regarding crossings between Bedford and Bletchley, and between Aylesbury and Princes Risborough. Public meetings in these areas will be scheduled to take place starting in early 2015.

This series of public events is a forerunner to any formal consultation required as part of the statutory process to obtain necessary authorisation for East West Rail through a Transport and Works Act order.



Public consultation meetings on East West Rail crossings

| Location* | Date* | Railway Crossings |
|--|--|---|
| Marsh Gibbon Marsh Gibbon CE School Castle Street, Marsh Gibbon, Bucks OX27 0HJ | Wednesday 22nd October 2014 5.30pm to 8.30pm | <ul style="list-style-type: none"> • Shepherd's Furze • Grebe Lake • Twyford No 3 • Twyford No 2 • Charndon No 3 • Poundon No 2 • Barnwell Farm • Marsh Gibbon |
| Launton & Bicester | Wednesday 19th November 2014 | <ul style="list-style-type: none"> • Launton • Launton No 2 • Launton No 1 • Grange Farm • Manor Farm • Bicester Eastern Perimeter Road • Jarvis Lane Footpath • Bicester London Road |
| Quainton | Wednesday 10th December 2014 | <ul style="list-style-type: none"> • Sheephouse Wood • Charndon Footpath No 9 • Grendon Underwood Footpath No 31 • Ditchburns, Quainton Footpath No 26 • Quainton Footpath No 24 • Diddershall • Upper South Farm • Quainton Footpath No 31 • North Bucks Way No 1 • Lower Blackgrove No 1 • Fleet Marston Farm • Griffin Lane |
| Little Kimble | Wednesday 28th January 2015 | <ul style="list-style-type: none"> • Aylesbury Station • Aylesbury No 31 • Old Stoke Road • Stoke Mandeville No 17 • Moat Farm No 2 • Moat Farm No 1 • Stoke Mandeville No 4 • Marsh Lane • Dodds Farm • Aspley Manor Farm No 2 • Aspley Manor Farm No 1 • Great and Little Kimble No 29B • Great & Little Kimble No 38A • Great & Little Kimble No 3B • North Bucks Way Footpath No 2B • Great & Little Kimble No 2C • Great & Little Kimble No 27 • Princes Risborough No 31 • Westmead • Church Path Footpath No 41 • Mount Way Footpath No 2 |

**These dates are provisional and may be subject to change.*

Details of times and venues will be publicised nearer the time on the East West Rail website, via local Parish Councils and advertised locally. If you have queries about any specific crossings, please contact the team by email to EWRPublicInformation@networkrail.co.uk